

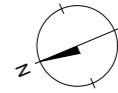
Mietflächenplan

Puls5
Giessereistrasse 18
8005 Zürich

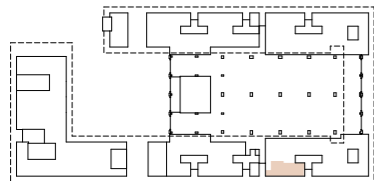
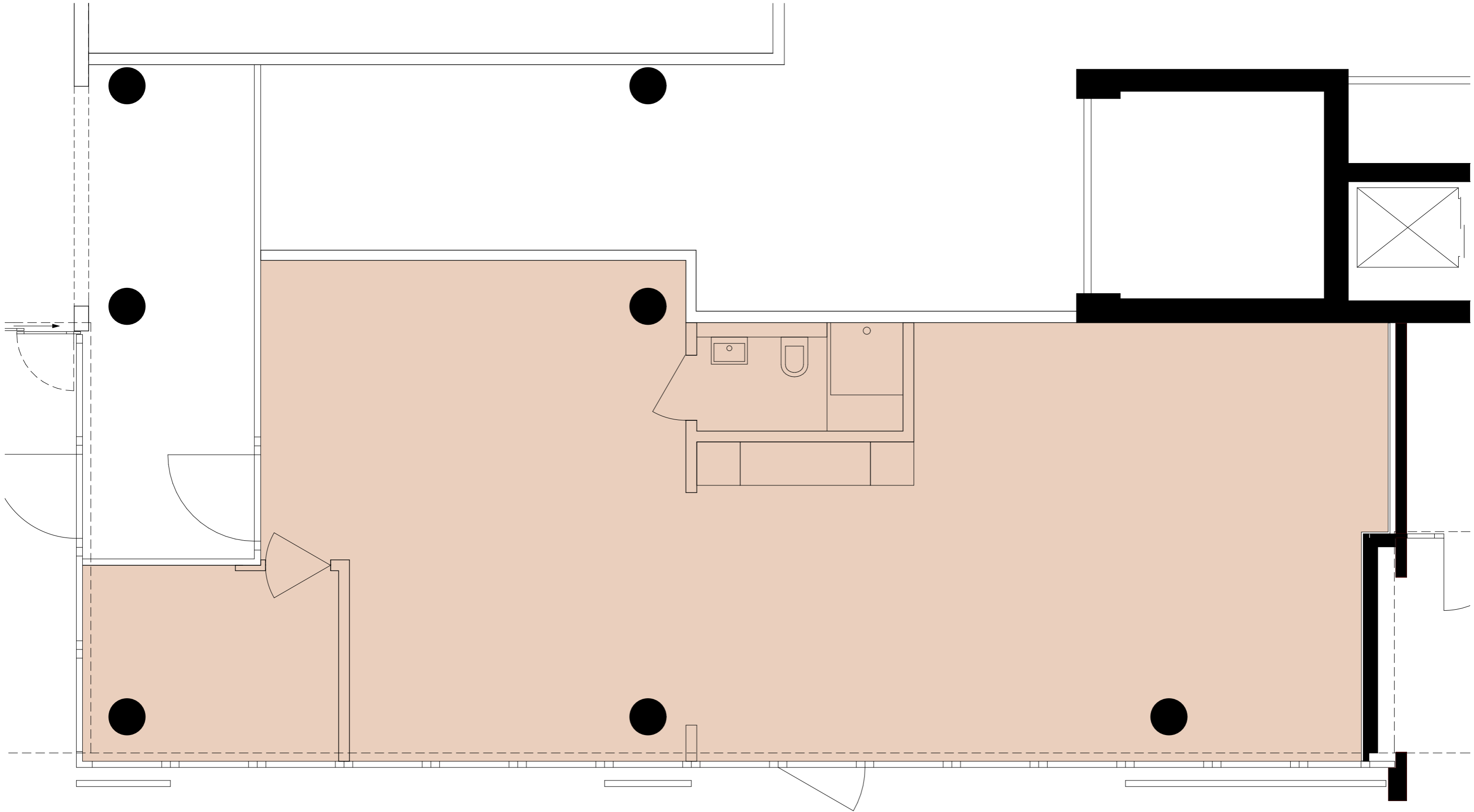
EG_Fläche E_Giessereihalle

 intershop

SGI Promotion AG, Zürich



Datum : 25.07.2018, So
rev : 25.07.2018, So
Massstab : 1:50



 Mietfläche: 105.0 m²

 Bestand/Grundausbau

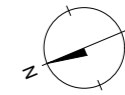
zu vermieten

Puls5
Giessereistrasse 18, 8005 Zürich

EG_Fläche E_Übersichtsplan

 **intershop**

SGI Promotion AG, Zürich



Datum : 28.02.2018, So
rev : 03.04.2018, So
Massstab : 1:500

